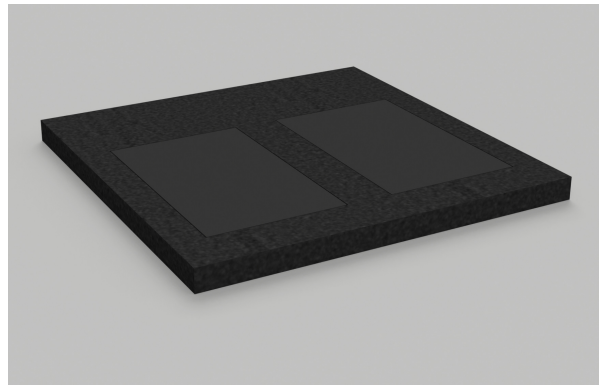
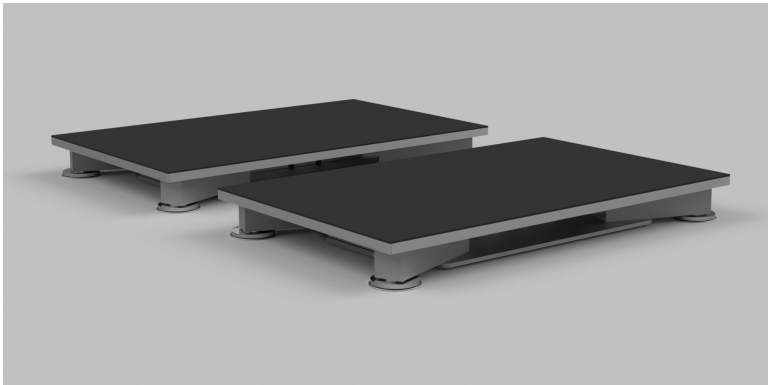


## ForceDecks FDLite - Technical Specifications v.1.2



### **Sensor Plate (x2)**

<b>Dimensions:</b>	w. 300mm x l. 485mm x h. 53mm
<b>Weight:</b>	10kg (or 20kg per pair)
<b>Sample Rate:</b>	up to 1000 Hz
<b>Capacity:</b>	2,000 kg (500kg per load cell)
<b>Safe overload:</b>	3,000 kg (750kg per load cell)
<b>Maximum overload:</b>	4,000 kg (1,000kg per load cell)
<b>Measuring Range:</b>	0 - 1,000kg (Fz only]
<b>Resolution:</b>	c. 30g / 0.3 N
<b>Linearity &amp; Hysteresis:</b>	<0.05% over calibrated range

### **Optional foam surround**

<b>Dimensions:</b>	w. 848mm x l. 848mm x h. 53mm
<b>Weight:</b>	1.3kg

### **Electrical**

<b>Power:</b>	Output 24V from supplied 90-264V PSU
<b>Connectivity:</b>	USB (NB: only 1 x USB required to connect both Sensor Plates).

### **PC Requirements**

<b>Processor:</b>	Intel i5/i7
<b>OS:</b>	Windows x64 version 7 or later
<b>Ram:</b>	8GB
<b>Hard Drive:</b>	500MB (NB: minimum for install, actual value depends on storage requirements).
<b>Ports:</b>	1 x USB 2.0/USB 3.0